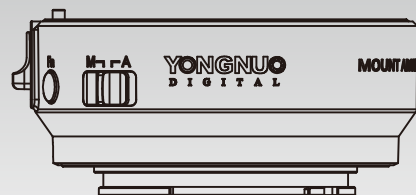


转接环
EF-E II

在使用本产品之前，请务必先仔细阅读说明书，以便了解产品功能和正确使用。请务必保管好本说明书，以便日后能随时查阅。

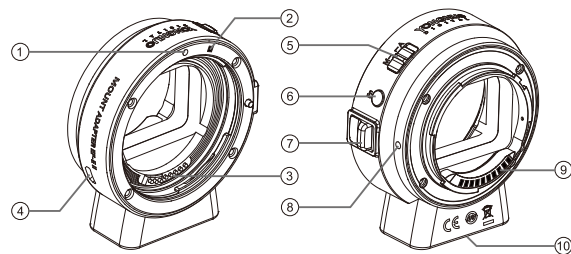
感谢您购买永诺产品！

永诺EF-E II是一款可将EF/EF-S系列镜头用于E卡口相机的智能转接环。本产品搭载电子触点，可实现自动对焦、自动曝光等镜头自带的其他功能。

注意事项

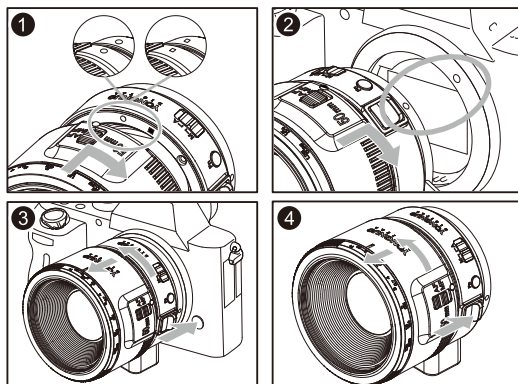
- ★当您所使用的镜头比相机还要重时，在使用过程中请务必握住镜头。
- ★卸下适配器后，请务必安装前后盖以保护电子触点。
- ★划痕、污渍或指纹可能导致通信不良或腐蚀，从而导致转接环故障。若电子触点被弄脏，请用软布擦净。
- ★经转接环转接后，镜头的最近对焦距离会稍微变长，最大放大倍率和视角会产生变化。
- ★在使用转接环时，请使用镜头上的开关来设置镜头相关功能，如果相机菜单与镜头设置不同，应以镜头设置为准。
- ★安装转接环后，如果相机出现异常情况，请尝试关闭电源并取下电池后再装上电池重新开机，如果情况依旧则请联系永诺服务热线400-001-3888或发送邮件至service@hkyongnuo.com。

部件名称



- ①EF镜头安装标记
- ②EF-S镜头安装标记
- ③电子触点（镜头端）
- ④USB接口
- ⑤对焦系统选择开关
- ⑥Fn多功能按钮
- ⑦镜头释放杆
- ⑧相机安装标记
- ⑨电子触点（相机端）
- ⑩三脚架固定槽

安装和卸下转接环



● 安装转接环

1. 关闭相机电源。
2. 将镜头安装到转接环上。
将镜头上的安装标记与转接环上的相同标记对齐，然后以顺时针方向转动镜头直至听到咯的一声为止。（如图①）
3. 将装好镜头的转接环安装到相机上。
将转接环上安装标记与相机上的相同标记对齐，然后以顺时针方向转动转接环，直至听到咯的一声为止。（如图②）

● 卸下转接环

1. 关闭相机。
2. 将安装着镜头的转接环从相机上卸下。
按住相机上的镜头释放按钮，同时以逆时针方向转动转接环，在转接环停止转动时将其取下。（如图③）

3. 将镜头从转接环上卸下。

按住转接环上的镜头释放杆，同时以逆时针方向转动镜头，在镜头停止转动时将其取下。（如图④）

选择对焦系统

本产品有两种对焦系统以供选择：AF系统和混合对焦系统。两种对焦系统均需相机支持才可正常使用，具体详情请参阅相机说明书。

对焦系统设置方法：将对焦系统选择开关设为[A]或[M]，“A”表示AF对焦系统，“M”表示混合对焦系统。

切换对焦系统后，需重启相机电源或重新拆装一次镜头，否则切换操作可能无效。

AF对焦系统：开启AF对焦系统，可通过相机的<AF系统>菜单选择对焦方式：相位检测AF（PDAF）/对比度AF（CDAF）。
混合对焦系统：开启混合对焦系统，转接环将自动匹配相机对焦方式。混合对焦系统启用期间，所使用的自动对焦区域内如果有相位对焦AF测距点，相机将组合相位差AF和对比度AF进行自动对焦。

更新固件

1. 关闭相机电源，将转接环从相机和镜头上取下。
2. 打开升级软件。
3. 通过USB线将转接环连接到电脑。
4. 按照软件提示选择需要更新的固件。
5. 点击软件<升级>按钮开始更新。
6. 软件提示更新完成时，拔下USB线。

Fn多功能按钮

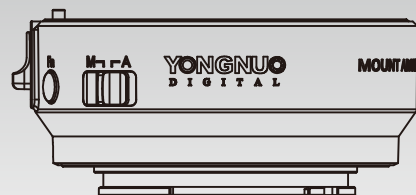
Fn多功能按钮暂未开放，更多相关功能将通过更新固件方式陆续开放，请留意我司官方公告。

规格

兼容镜头	EF/EF系列镜头
兼容相机	E卡口相机
外部接口	USB接口
三脚架固定槽	CU1/4"
最大长度和直径	76.5 × 31mm
重量	约99.8g

本使用说明书中的功能是依据本公司的测试条件获得的。设计和规格如有变更，恕不另行通知。
本说明书中的永诺（YONGNUO）徽标是深圳市永诺摄影器材股份有限公司在中国或/和其他国家（地区）的注册商标或商标。其他所有商标均为其各自所有者拥有。

MOUNT ADAPTER EF-E II



Before using this product, please read this instruction manual thoroughly to learn product function and proper use. Keep this manual properly for reference in the future.

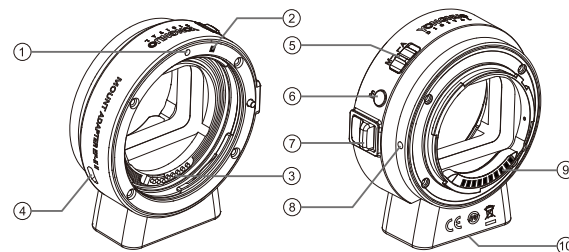
Thanks for choosing YONGNUO products!

YONGNUO smart adapter mount EF-E II is a smart adapter specially developed for adapting EF/EF-S lens to E mount camera. For this smart adapter carries electronic contact, the auto-focusing function, auto-exposure function and other function of the lens can be achieved.

Announcements

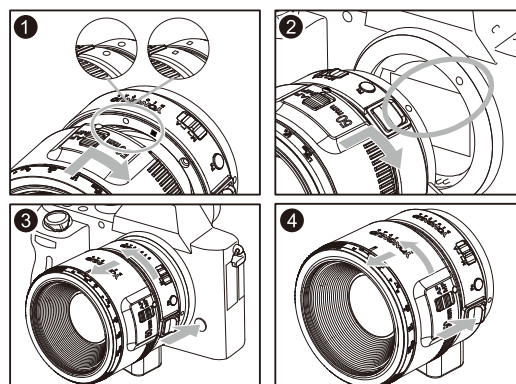
- ★ When the lens being used is heavier than the camera, please hold the lens steadily.
- ★ After removing adapter, please put on the front cover and rear cover to protect the electronic contact.
- ★ Scratch, dirty mark or fingerprint may lead to bad communication or corrosion, and result in adapter malfunction. If the electronic contact gets dirty, please wipe it with soft cloth.
- ★ After adapted by this smart adapter, the closest focusing distance of the lens will be extended slightly, the maximum amplification factor and the view angle will be different.
- ★ When using this smart adapter, please press the switch on the lens to set the lens function. If the settings of the camera is different from the settings of the lens, the settings of the lens shall prevail.
- ★ After this smart adapter is mounted, if the state of the camera is abnormal, please try to turn off the power supply of the camera, remove the batteries for a while, put the batteries back in and turn on the camera again. If the situation remains unchanged, please contact YONGNUO customer service at 400-001-3888 or write email to service@hkyongnuo.com.

Components



- ① EF lens installation sign
- ② EF-S lens installation sign
- ③ Electronic contact (lens-end)
- ④ USB Port
- ⑤ Focus System select switch
- ⑥ Fn Multi-function button
- ⑦ Lens release lever
- ⑧ Camera installation sign
- ⑨ Electronic contact (camera-end)
- ⑩ Tripod stand slot

Installation & Remove Instruction of the Adapter



● Installation

1. Turn the camera off.

2. Install the lens on the adapter. ①

Align the installation sign on the lens to the installation sign on the adapter, and rotate the lens clockwise until a "click" sound is heard.

3. Install the lens with smart adapter on the camera. ②

Align the installation sign on the adapter to the installation sign on the camera, and rotate the adapter clockwise until a "click" sound is heard.

● Remove

1. Turn the camera off.

2. Remove the lens with smart adapter from the camera. ③

At the same time when you press the lens release button on the camera, rotate the smart adapter counterclockwise until it stops rotating, and then remove the adapter.

3. Remove the adapter from the lens. ④

At the same time when you press the lens release lever on the adapter, rotate the lens counterclockwise until it stop rotating, and then remove the lens

Select Focus System

This product provides two focus system for selection: AF focus system, and mixed-focus system. Only when the camera supports, these two system can work normally. For details please refer to the user manual of the camera.

Setup method: set the focus system select switch to A or M, 'A' means AF focus system, 'M' means Mixed-focus system.

After switching the focus system, the camera power should be restarted or the lens should be disassembled once, otherwise the switching operation may be invalid.

AF focus system :With AF focus system, you can select focus mode from [AF SYSTEM] menu of the camera: Phase Detection AF (PDAF)/Contrast Detection AF (CDAF).

Mixed-focus system :With mixed-focus system, the adapter will match the focus mode of the camera automatically. When mixed-focus system is enabled, if there is PDAF distance measuring point in the auto-focus range in use, the camera will mix PDAF and CDAF and focus automatically.

Firmware Upgrade

1. Turn the camera off, and remove the adapter from the camera and lens.
2. Open the upgrade software.
3. Connect the adapter to computer with USB cable.
4. Select the firmware according to the hint.
5. Click <Upgrade> button to update the firmware.
6. When the upgrade finished, unplug USB cable.

Fn Multi-function Button

Fn multi-function button is temporarily unreleased. More related function will be released by firmware upgrade. Please pay attention to the official announcement from YONGNUO to get the latest information.

Specification

Lens compatible	EF/EF series Lens
Camera compatible	E mount camera
External Port	USB Port
Tripod stand slot	CU1/4"
Maximum diameter & length	76.5×31mm
Weight	approx. 99.8g

The functions on this manual are obtained based on the test conditions of our company. Further notice will not be given if there are any changes for the design and specification. The YONGNUO logo on this manual is registered trademark or trademark owned by SHENZHEN YONGNUO PHOTOGRAPHIC EQUIPMENT Co., Ltd. in China or other countries (regions). All other trademarks are the property of their respective owners.